

## IQ-EQ China SPV Services

IQ-EQ is a leading fund administrator employing over 5,800 people across 25 jurisdictions worldwide. Assets under administration \$750bn\*. Below are the services we can provide in the real estate space.

Our expertise	SPV administration
<ul style="list-style-type: none"> <li>• Private equity</li> <li>• Real estate</li> <li>• Private credit</li> <li>• Venture capital</li> <li>• Energy and infrastructure</li> <li>• Hedge/long-only</li> <li>• Real assets and infrastructure</li> <li>• Digital assets</li> <li>• Fund of funds</li> <li>• Managed accounts</li> <li>• Hybrid funds</li> </ul>	<ul style="list-style-type: none"> <li>• Book-keeping and accounting – In China GAAP and/or US GAAP/IFRS</li> <li>• AML/KYC of both investors and investments</li> <li>• Audit support; co-ordination with auditors</li> <li>• Assisting with tax filing for CIT and VAT</li> <li>• Payments - regular and ad-hoc</li> </ul>

### Why choose IQ-EQ China



Native-level fluency in Mandarin and English



Deep understanding of Chinese structured finance requirements

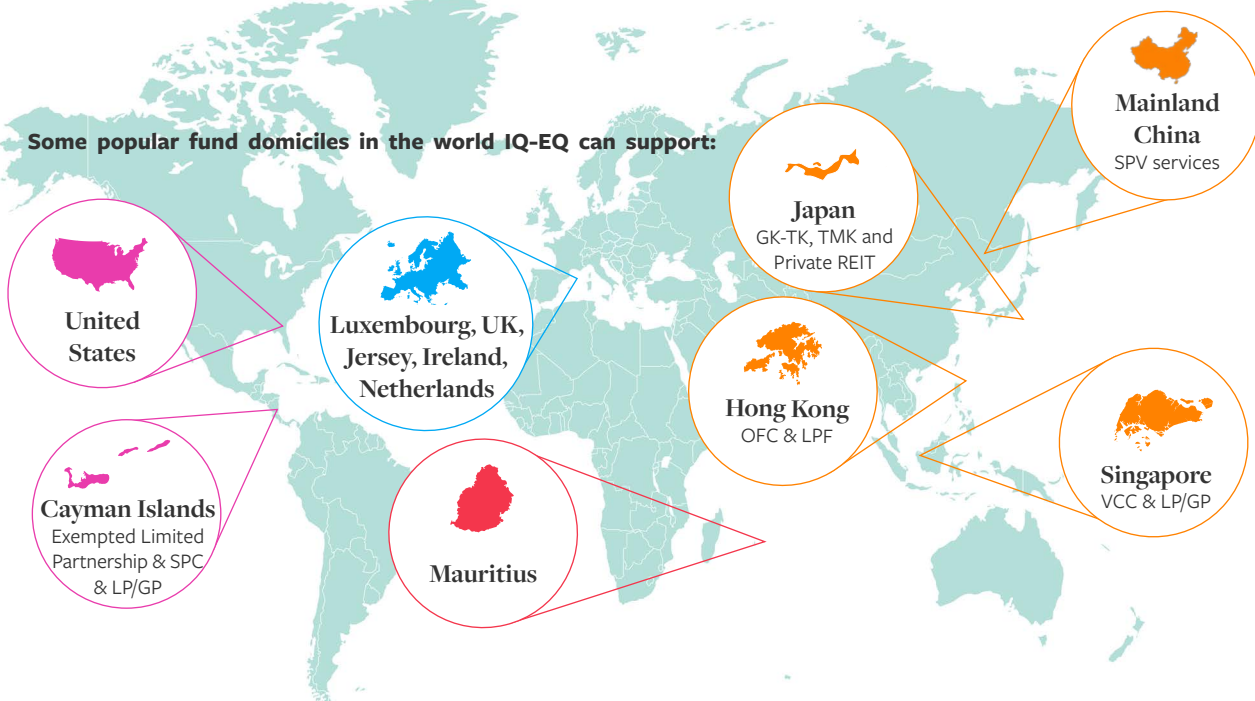


Seamless work stream between offices in China, Singapore and Hong Kong



Qualified team of CPAs with extensive SPV experience

Some popular fund domiciles in the world IQ-EQ can support:



## Key contacts



**Sridhar Nagarajan**  
Managing Director, Singapore &  
Regional CEO, Asia, Middle East & Africa

E [sridhar.nagarajan@iqeq.com](mailto:sridhar.nagarajan@iqeq.com)  
T +65 6955 1688



**Neil Synnott**  
Chief Commercial Officer  
APAC

E [neil.synnott@iqeq.com](mailto:neil.synnott@iqeq.com)  
T +65 6955 1574



**Clare Chang**  
Managing Director  
Greater China

E [clare.chang@iqeq.com](mailto:clare.chang@iqeq.com)  
T +852 3180 0497



**Rachel Wu**  
Business Development Director  
Greater China

E [rachel.wu@iqeq.com](mailto:rachel.wu@iqeq.com)  
T +852 3180 0495



**Catherine Law**  
Business Development Director,  
Greater China

E [catherine.law@iqeq.com](mailto:catherine.law@iqeq.com)  
T +852 3180 0449



**Jerome Kong**  
Associate Director, Private Wealth,  
Greater China

E [jerome.kong@iqeq.com](mailto:jerome.kong@iqeq.com)  
T +852 3180 0481

## Key facts and figures\*

People worldwide	Worldwide location	Assets under administration	Minimum senior team experience	Funds under administration
<b>5800<sup>+</sup></b>	<b>25</b>	<b>\$750<sup>+</sup> bn</b>	<b>20yrs</b>	<b>800<sup>+</sup></b>

## Our locations worldwide

### THE AMERICAS

Bermuda  
British Virgin Islands  
Cayman Island  
Curaçao  
USA (Austin, Bedford NH, Chicago, Dallas, Fort Worth, Houston, New York, Rapid City SD, San Francisco & West Palm Beach)

### MIDDLE EAST

United Arab Emirates

### EUROPE

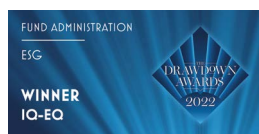
Belgium  
Cyprus  
France  
Guernsey  
Ireland  
Isle of Man  
Jersey  
Luxembourg  
Switzerland  
The Netherlands  
UK

### AFRICA

Mauritius  
South Africa

### ASIA

Mainland China  
Hong Kong  
India  
Japan  
Philippines  
Singapore



\*Correct as of March 2024

This document is provided for information purposes only and does not constitute legal, tax, investment, regulatory, accounting or other professional advice. For more information on the legal and regulatory status of IQ-EQ companies please visit [www.iqeq.com/legal-and-compliance](http://www.iqeq.com/legal-and-compliance)

Reference: IH\_27032024  
© IQ-EQ 2024

Find out more  
[www.iqeq.com](http://www.iqeq.com)

Follow us

