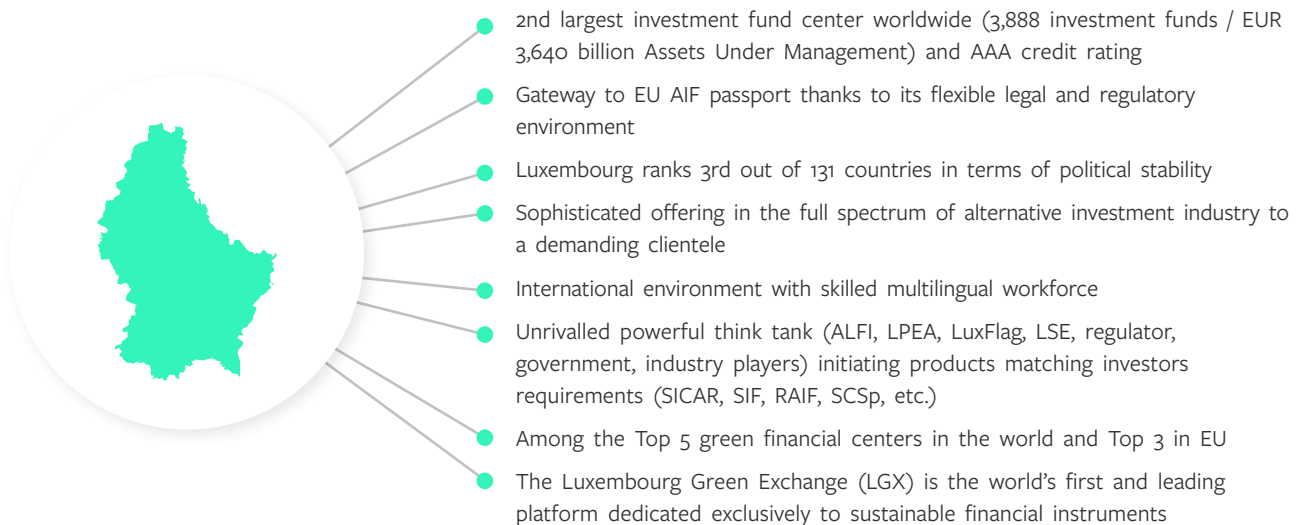


Why IQ-EQ Luxembourg

Luxembourg is a global hub for international fund distribution and home to Europe's premier investment fund centre (ranking second in worldwide basis). It benefits from an attractive, comprehensive and unique toolbox for investment fund solutions. The Grand Duchy is therefore a reputable jurisdiction with the perfect ecosystem to serve international or local asset managers (institutional investors, banks, sovereign wealth funds, pension funds, insurance companies, endowments), private clients and family offices looking to access the EU.



Why choose IQ-EQ in Luxembourg

Local multijurisdictional expertise: You need help navigating Luxembourg's evolving regulatory environment - our business goes back to 1953 and has grown in complete alignment with the ever-changing financial environment. Today our 400+ professionals have the expertise to support you throughout the lifecycle of your structure, however complex

Comprehensive service offering: You operate across different industry segments and asset classes - we provide one of the most complete suite of services for fund and asset managers, multinationals, private and institutional asset owners and in the market

Global network: You have global structures and investments - we deliver expert services from our network of offices in 24 jurisdictions across 4 continents

Proprietary technology solutions: Technology is a key component of your strategy - we have developed technology solutions tailored to your needs; such as MaxComply our RegTech system and IQ-EQ Cosmos, our multi-asset class portfolio monitoring platform

Industry-leading fund administration and accounting software: You rely on quality data - we use Allvue, Yardi, FIS Investran and PFS Paxus

ESG solutions: ESG compliance is important to you - we have developed a comprehensive ESG solution for asset manager, investors, and their portfolio companies

How IQ-EQ can help

As business expand across borders, so do compliance risks and administrative burdens. We provide a 'one-stop shop' back office outsourcing solution for business functions including finance and accounting, tax compliance as well as front-office support services. With our support, your company can continue to grow while avoiding the standard business bottlenecks. Our tailor-made solutions enable you to not only focus on your firm's core activities but also retain its entrepreneurial speed and agility as it expands.

| Segments | Our expertise | Our services |
|---|--|--|
|  <p>Fund & Asset Managers</p> <p>Whatever stage your fund is at, we have the expertise to fully support your needs, wherever you operate from and wherever you domicile your funds. We coordinate the whole project. We can also work with you to tailor our services to your reporting requirements.</p> | <ul style="list-style-type: none"> Private Equity Real Assets Private Debt Hedge Funds Venture Capital | <ul style="list-style-type: none"> Fund administration services Investor services AIFM Services Depositary services Tax compliance Regulatory reporting Loan administration services |
|  <p>Debt, Capital Market & Corporates</p> <p>Navigating debt, corporate and capital markets has never been more complex. Our tailored solutions ensure your additional operational and regulatory requirements are met with minimal disruption. So you can focus on what you do best – growing your business.</p> | <ul style="list-style-type: none"> CLO's Real Estate Loan Admin Aviation Insurance Securitisation Debt Structuring Corporate Services Restructuring/Acquisitions and Asset Disposal | <ul style="list-style-type: none"> Company Formation / Liquidation Corporate Governance Financial Statements BEPS, ATAD and DAC6 support and TP documentation HR and Payroll Services Domiciliation and office spaces services Fiducie ESG Services Directorship Services |
|  <p>Private & Institutional Asset Owners</p> <p>We are uniquely positioned to deliver a suite of asset services specifically tailored around the strategy and desired outcomes of all major asset owners, including both institutional and private.</p> | <ul style="list-style-type: none"> Single Family Office / Multi Family Office Foundations Family Funds Partnerships Trust Companies Securitisation vehicles | <ul style="list-style-type: none"> Entity establishment and domiciliation Portfolio Monitoring Reporting Luxury Assets Management Private Funds management Tax compliance Escrow services Dissolution / liquidation Directorship |



Key facts and figures*

| People worldwide | Worldwide locations | Assets under administration | Minimum senior team experience | Funds under administration |
|-------------------------|---------------------|-----------------------------|--------------------------------|----------------------------|
| 4300⁺ | 24 | \$750⁺ bn | 20_{yrs} | 800⁺ |

Key contact in Luxembourg



Diana Senanayake

Regional CEO, Continental Europe | Managing Director

E diana.senanayake@iqeq.com

T +352 466 111 3456

M +352 621 425 436



Bram Eijsbouts

Chief Commercial Officer

E bram.eijsbouts@iqeq.com

T +352 466 111 2390

M +352 621 671 378



Femy Mouftaou

Managing Director, IQ EQ Fund Management

E femy.mouftaou@iqeq.com

T +352 466111 2298

M +352 621 581 187



Richard Behmer

Head of Private Wealth

E richard.behmer@iqeq.com

T +352 466111 3640

M +352 621 705 383

Our locations worldwide

THE AMERICAS

Bermuda
British Virgin Islands
Cayman Island
Curaçao
USA (Austin, Bedford NH, Chicago, Dallas, Fort Worth, Houston, New York, Rapid City SD, San Francisco & West Palm Beach)

EUROPE

Belgium
Cyprus
France
Guernsey
Ireland
Isle of Man
Jersey
Luxembourg
Switzerland
The Netherlands
UK

AFRICA

Mauritius
South Africa

ASIA

Mainland China (Shanghai & Shenzhen)
Hong Kong
India
Japan
Philippines
Singapore



e privateclient



*Correct as of 6 October 2022

This document is provided for information purposes only and does not constitute legal, tax, investment, regulatory, accounting or other professional advice. For more information on the legal and regulatory status of IQ-EQ companies please visit www.iqeq.com/legal-and-compliance

Reference: HMG485_10102022_01
© IQ-EQ 2022

Find out more
www.iqeq.com

Follow us

